



SUNCOMBE
CIP & PROCESS ENGINEERS

BedWasher™



Suncombe Ltd, Jade House, Lockfield Avenue, Brimsdown, Enfield, Middlesex, EN37JY, United Kingdom

T +44(0)20-8443-3454 F +44(0)20-8443-3969 E info@suncombe.com W www.suncombe.com

www.suncombe.com

About Us

Suncombe Ltd supply Cleaning and hygienic processing technology for the Medical, BioPharma, Food and other critical hygiene industries. From CIP to PartsWashers, we are uniquely capable of offering you a complete washing and processing solution.

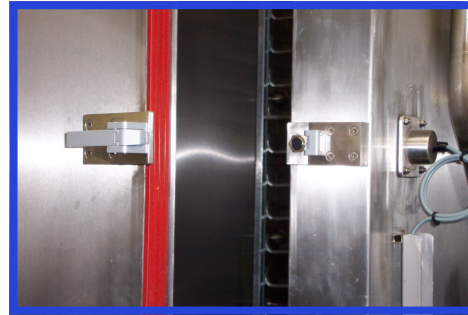
Formed in 1961, we have a tremendous amount of experience in-house and provide a high level of technical and engineering expertise. Our completed projects range from stand-alone systems to complete processing solutions. Our products are built to a high quality and encompass all relevant legislation, guidelines, testing, documentation, quality assurance and traceability requirements.

BedWasher™ Introduction

Suncombe BedWasher™ have been specially developed to meet the requirements of the Medical industry for high performance washing and disinfecting systems which deliver consistent, repeatable cleans every time. Using standard and custom loading arrangements and a fully configurable recipe system, they allow total user customization of each cleaning task.

Lean Technology

Adopting LEAN principles, all Suncombe products are developed to ensure they minimise utilities and time, whilst ensuring the safety of the operators and the efficiency of the cleaning. Utilising innovative fluid handling techniques, they incorporate a combination of traditional and new technologies to provide an environmentally friendly, low water and energy usage washing facility that is safe and ergonomic for the operators.



Product Development

Developed from a range of washers supplied for over 40 years, the BedWasher™ are front loading or pass-through large washer/disinfectors, which are designed for the cleaning of Bed frames, Trolleys, Commodes, Bedside tables, Containers, Operating tables and any other moveable equipment that requires cleaning and disinfection.

Washing Chamber

316L Stainless steel radius-corners, sloping design and smooth, crevice-free with a polished surface finish. With rotary spray manifolds to ensure total coverage, the chamber includes a high power electrical liquid heater for fast heatup times

Detergent Dosing

one to four liquid dosing systems, which can be incorporated within any recipe step at any concentration, complete with dosing safeguards including low detergent confirmation and detergent dosed volume confirmation, as well as pump priming facilities.

Door

The washer is fitted with a hinged insulated stainless steel door fitted with an optional observation window and interior light. Superior door sealing is provided by an inflatable seal ensuring full containment and air tight closing every time.

Printer

Providing a real time record of the washer operation, the panel printer prints out a comprehensive record of the clean including the critical process parameters, providing a positive sign off area on completion. A separate desktop printer can be used to provide printouts of recipes setups, alarms and events.

Automation

Suncombe offers four different control packages, CIPSuite1™ to CIPSuite4™, they all incorporate the optimum control for operation, providing a simple to use interface which incorporates advanced facilities.

Validation/ Documentation

The lifecycle approach is adopted (DQ, FAT, SAT, IQ & OQ) with validation being key to every stage of the development process, including Factory Acceptance Testing (FAT), SAT and Qualification.

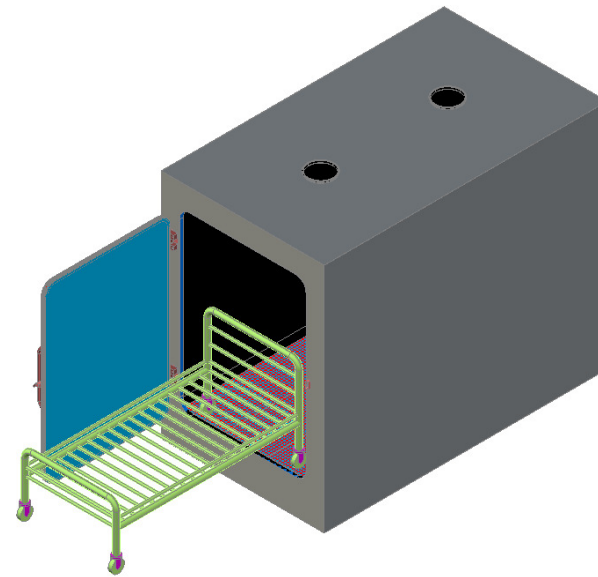
Loading Accessories

Standard and Bespoke trolleys, racks, carriers, injectors and baskets. Using a modular approach they allow total flexibility allowing multiple use and thereby reducing the need for multiple accessories, saving costs and space. 3D modelling and riboflavin testing to guarantee full coverage.

Key Features

- 316L Stainless steel wetted parts including radius-cornered chamber, distribution pipework and racks.
- Sloping design and smooth, crevice-free construction
- EPDM, PTFE FDA-approved elastomers and tri-clamp connections
- Enclosed head orbital welding to EN287/15614
- 316/304 stainless steel non-wetted parts
- Hygienic Butterfly valves
- Polished surfaces and optionally electropolished
- Large hygienic variable speed washing pump
- Certified hygienic instrumentation
- Fully self-draining
- An extensive range of standard range of trolleys are available for common applications.
- Optional electrical liquid heating for fast heatup times
- Bespoke trolleys, racks and combinations are available
- One to four liquid dosing systems including dosing confirmation
- Fully adjustable cycle parameters including pressures, times and air drying with temperatures up to 120°C,
- Available with Conductivity controllers for detergent concentration and purity of final waters.
- CIPSuite™ Control Systems with a colour graphic operator interface for visualisation
- Password control
- Up to 100 Fully configurable recipes
- In built troubleshooting and diagnostic ability
- USB port for connections to desktop printer
- Inbuilt Panel printer for printouts of operation
- Optional integrated drying system, variable drying temperature control up to 120°C, providing and fast efficient drying
- Optional air filter Magnehelic gauge to provide constant performance integrity
- Hinged insulated stainless steel door for ergonomic loading with optional observation window and interior light.
- Inflatable door seal ensuring full containment and air tight closing every time including a high temperature locking mechanism.

- Storage for up to 3 x 10 litre detergent containers
- Multiple chamber sizes to suit requirements and equipment to be cleaned
- Optional Storage tanks for water supply buffering and re-use
- Double wall insulated construction to reduce electricity consumption and heat loss.
- Side entry maintenance
- Final rinse recirculated or non-recirculated to eliminate possibility of cross-contamination between rinses.
- Single or double door pass-through versions available



Support

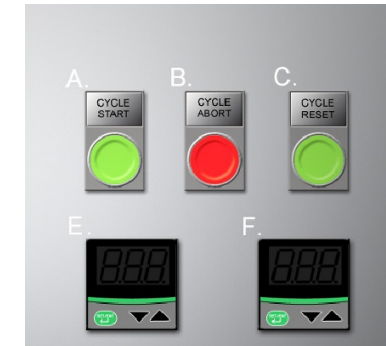
The Suncombe Technical Support and Customer Care departments' obligation is to provide total customer support. This support starts at the proposal stage, continues throughout the contract and thereafter. A personal customer care agent will be assigned to you at quotation stage and will support you throughout. The department currently supports all of our clients over the last 50 years. Support includes advise and surveys, installation and commissioning, User training, call-out repairs and service contracts for preventative maintenance.

Flexibility

Both Standard and custom designed trolleys, carriers and racks are often used to carry numerous components that are required to be cleaned. These are designed to fit to the specifications of the washer and achieve successful repeatable cleans.

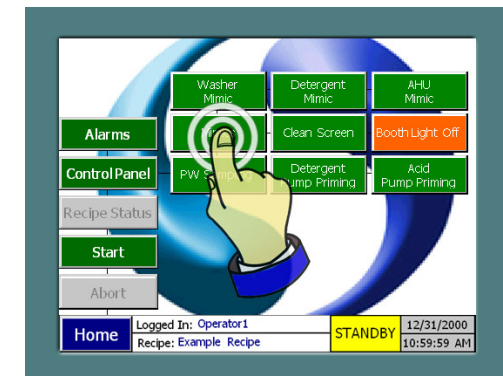
Automation

CIPSuite#1™ - Simple versatile automatic control system with 6 time changeable recipes.

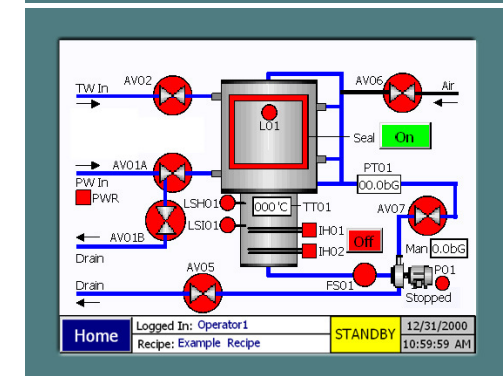


CIPSuite#2™ - Automatic control system with 100 fully configurable recipes, time changeable recipes, I/O faceplates, Mimic diagrams, Printer, Profibus Communications Protocol, Repeatable automatic cycles, User control with passwords, In built troubleshooting and diagnostic ability.

Control Panel



Mimic



Recipe Setup

