



SUNCOMBE
CIP, BIOWASTE & PROCESS SOLUTIONS

DrumWasher



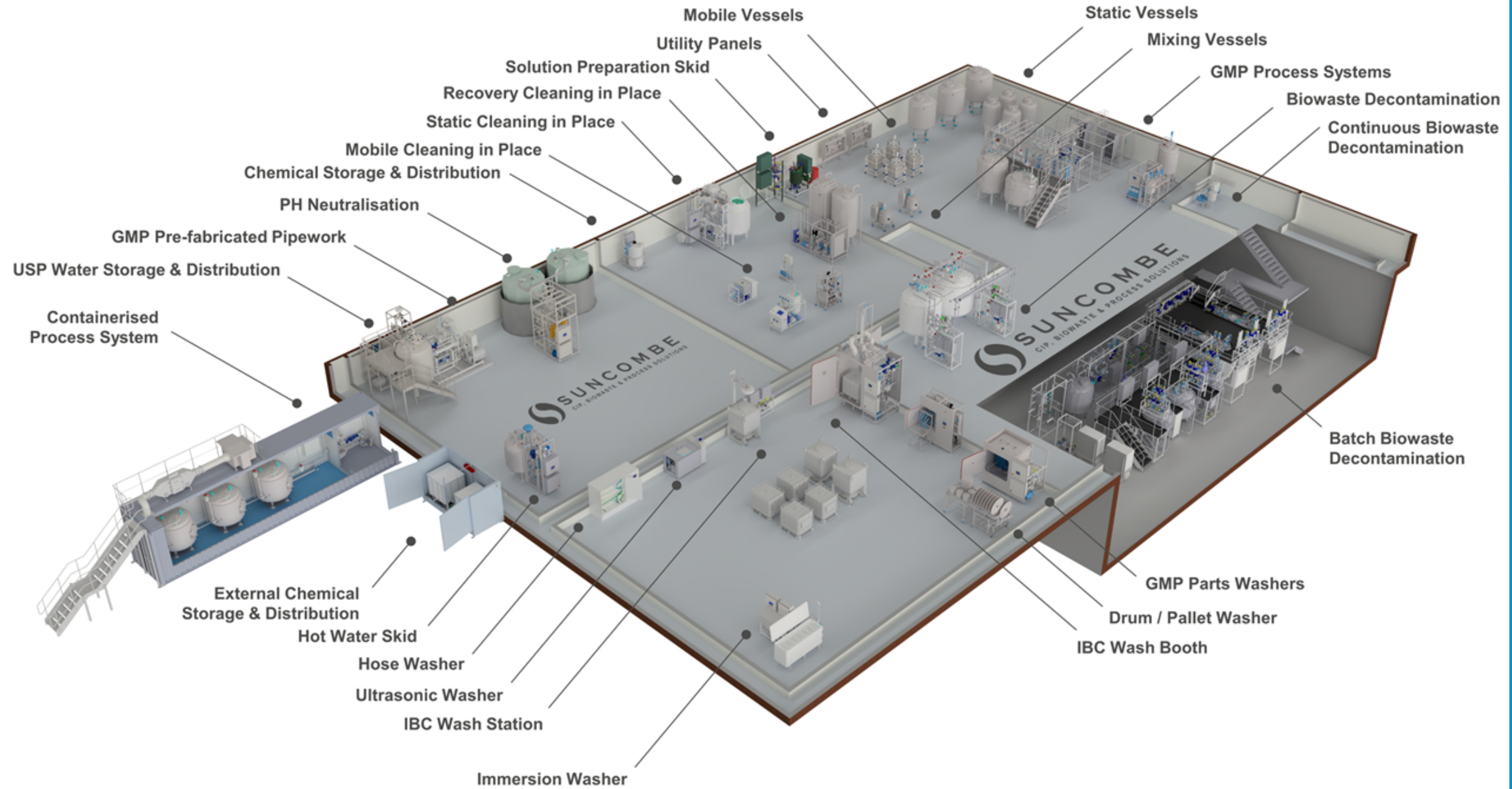
Suncombe Ltd, Jade House, Lockfield Avenue, Brimsdown, Enfield, Middlesex, EN37JY, United Kingdom

T +44(0)20-8443-3454 F +44(0)20-8443-3969 E info@suncombe.com W www.suncombe.com



SUNCOMBE

CIP, BIOWASTE & PROCESS SOLUTIONS



Product Portfolio

About Us

Suncombe Ltd supply Cleaning and hygienic processing technology for the BioPharma, Medical, Food and other critical hygiene industries. From CIP to PartsWashers, we are uniquely capable of offering you a complete washing and processing solution.

Formed in 1961, we have a tremendous amount of experience in-house and provide a high level of technical and engineering expertise. Our completed projects range from stand-alone systems to complete processing solutions. Our products are built to a high quality and encompass all relevant legislation, guidelines, testing, documentation, quality assurance and traceability requirements.

DrumWasher Introduction

Developed over the last 40 years, the Suncombe range of DrumWashers are front loading or pass-through washer/disinfectors, which are designed for the cleaning of drums, buckets, kegs, carboys and other containers. Designed to allow combinations of different sized containers to be cleaned, the DrumWashers can also be used for cleaning any other components, either by placing them in the washing chamber or using special racks.

Lean Technology

Adopting LEAN principles, all Suncombe products are developed to ensure they minimise utilities and time, whilst ensuring the safety of the operators and the efficiency of the cleaning. Utilising innovative fluid handling techniques, they incorporate a combination of traditional and new technologies to provide an environmentally friendly, low water and energy usage washing facility that is safe and ergonomic for the operators.



Typical Loads

Many different sized drums, carboys and containers can be washed. Standard and custom designed carriers and racks are also available to hold components for cleaning.



Washing Chamber

316L Stainless steel radius-corners, sloping design and smooth, crevice-free with a certified surface finish. With container location points, the chamber includes a high power electrical liquid heater for fast heatup times

Detergent Dosing

One to four liquid dosing systems, which can be incorporated within any recipe step at any concentration, complete with dosing safeguards including low detergent confirmation and detergent dosed volume confirmation, as well as pump priming facilities.

Door

The washer is fitted with a hinged insulated stainless steel door with superior door sealing provided by an inflatable seal ensuring full containment and air tight closing every time.

Typical Industries

Food, Dairy, Brewery, Beverage, Pharmaceutical Agro-chemical, Flavourings, Healthcare, Personal Care, and many other processing industries.

Validation/ Documentation

The lifecycle approach is adopted (DQ, FAT, SAT, IQ & OQ) with validation being key to every stage of the development process, including Factory Acceptance Testing (FAT), SAT and Qualification.

Manufacturing Standards

- 316 stainless steel product contact parts, 304 non-contact parts
- ASME BPE, 3A, cGMP standards, fully drainable, crevice free.
- T.I.G. Welding; using an argon gas purge & enclosed head orbital welding plant to EN ISO 15609
- ASME BPE standard Pipework to ASTM



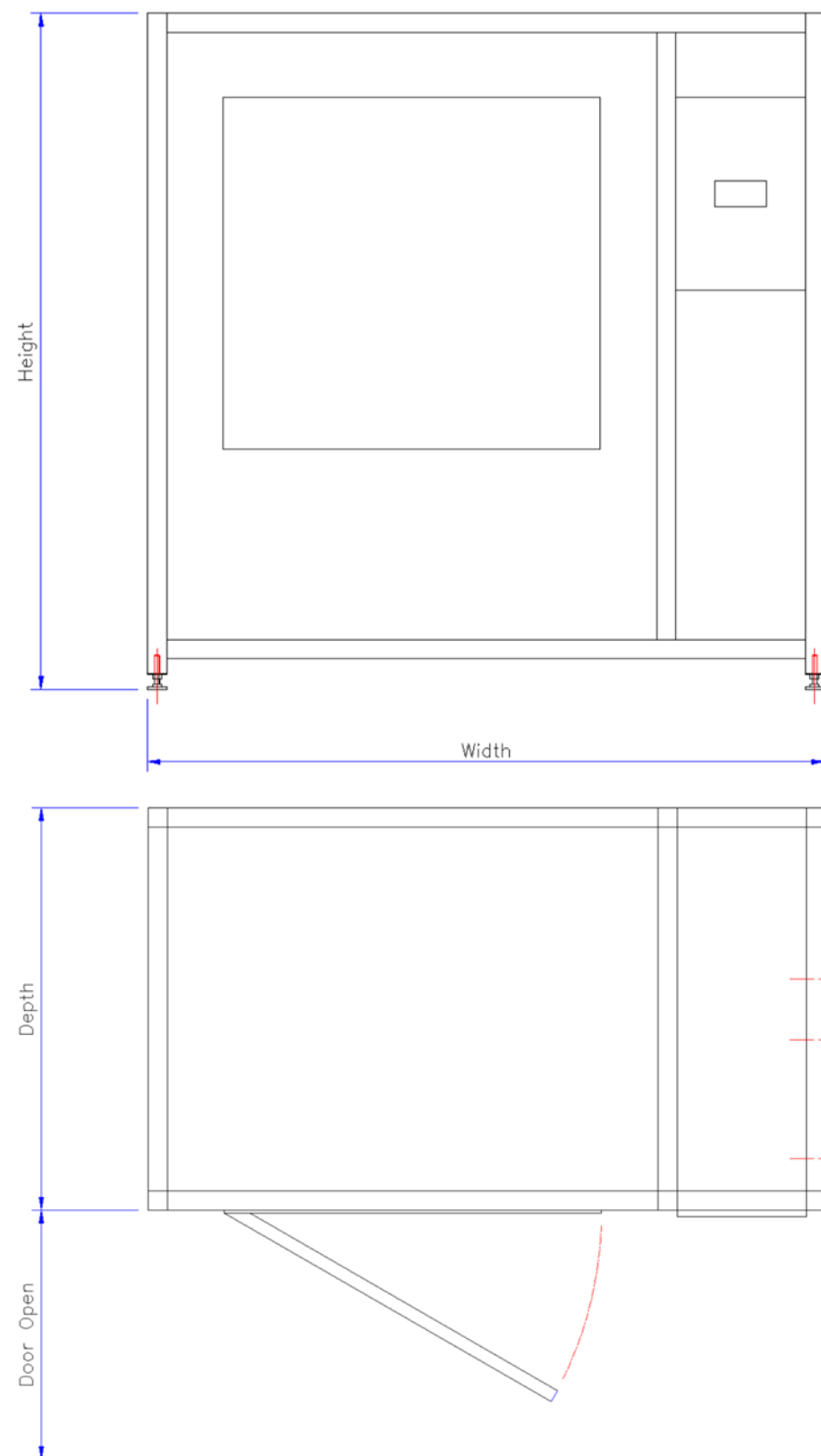
Key Features

- 316L Stainless steel wetted parts including radius-cornered chamber, distribution pipework and racks.
- Sloping design and smooth, crevice-free construction
- EPDM, PTFE FDA-approved elastomers and tri-clamp connections
- 316/304 stainless steel non-wetted parts
- BioPharma Diaphragm or butterfly valves
- Certified surface finishes to 0.4 ra and optionally electropolished
- Large hygienic variable speed washing pump
- BioPharma or hygienic instrumentation
- Fully self-draining including pump housing
- Designed for standard containers, special orientations available.
- High power electrical or steam liquid heating for fast heat-up times
- One to four liquid dosing systems including dosing confirmation
- Fully adjustable cycle parameters including temperatures up to 120°C, pressures and times
- Available with Conductivity controllers for detergent concentration and pure water.
- Optional integrated HEPA drying system, variable drying temperature control up to 120°C, providing fast and efficient drying
- Hinged insulated stainless steel door for ergonomic loading.
- Inflatable door seal ensuring full containment and air tight closing every time including a high temperature locking mechanism.

Support

The Suncombe Technical Support and Customer Care departments' obligation is to provide total customer support. This support starts at the proposal stage, continues throughout the contract and thereafter. A personal customer care agent will be assigned to you at quotation stage and will support you throughout. The department currently supports all of our clients over the last 50 years. Support includes advise and surveys, installation and commissioning, User training, call-out repairs and service contracts for preventative maintenance.

Dimensions



Reference	Drum Capacity	width mm	depth mm	height mm	door open mm
DrumWasher™ 1-200	1 x 200 litre drum	1,500	800	2,000	700
DrumWasher™ 2-200	2 x 200 litre drum	2,300	800	2,000	1,250
DrumWasher™ 4-200	4 x 200 litre drum	2,300	1,500	2,000	1,250
DrumWasher™ 6-200	6 x 200 litre drum	3,000	1,500	2,000	1,250

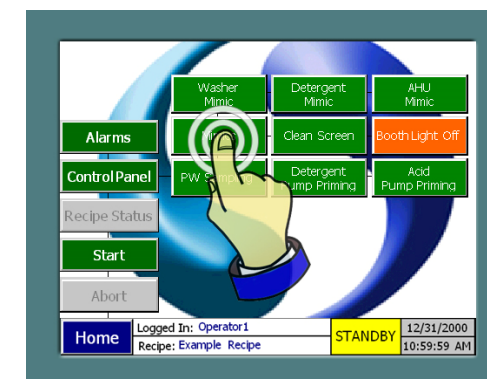
Automation

CIPSuite#1™ - Simple versatile automatic control system with 1 or 6 time changeable recipes.

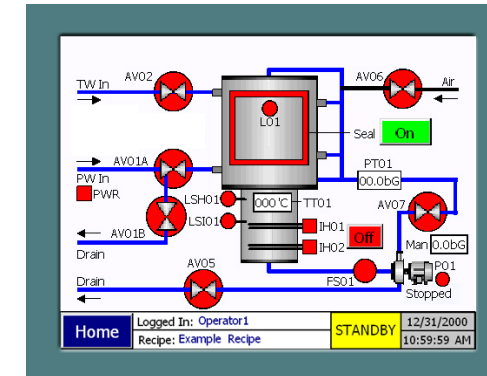


CIPSuite#2™ - Automatic control system with 100 fully configurable recipes, time changeable recipes, I/O faceplates, Mimic diagrams, Printer, Profibus Communications Protocol, Repeatable automatic cycles, User control with passwords, In built troubleshooting and diagnostic ability.

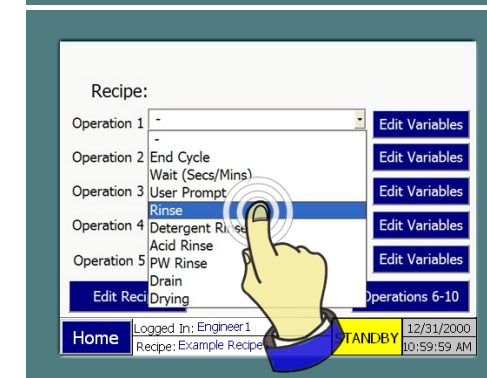
Control Panel

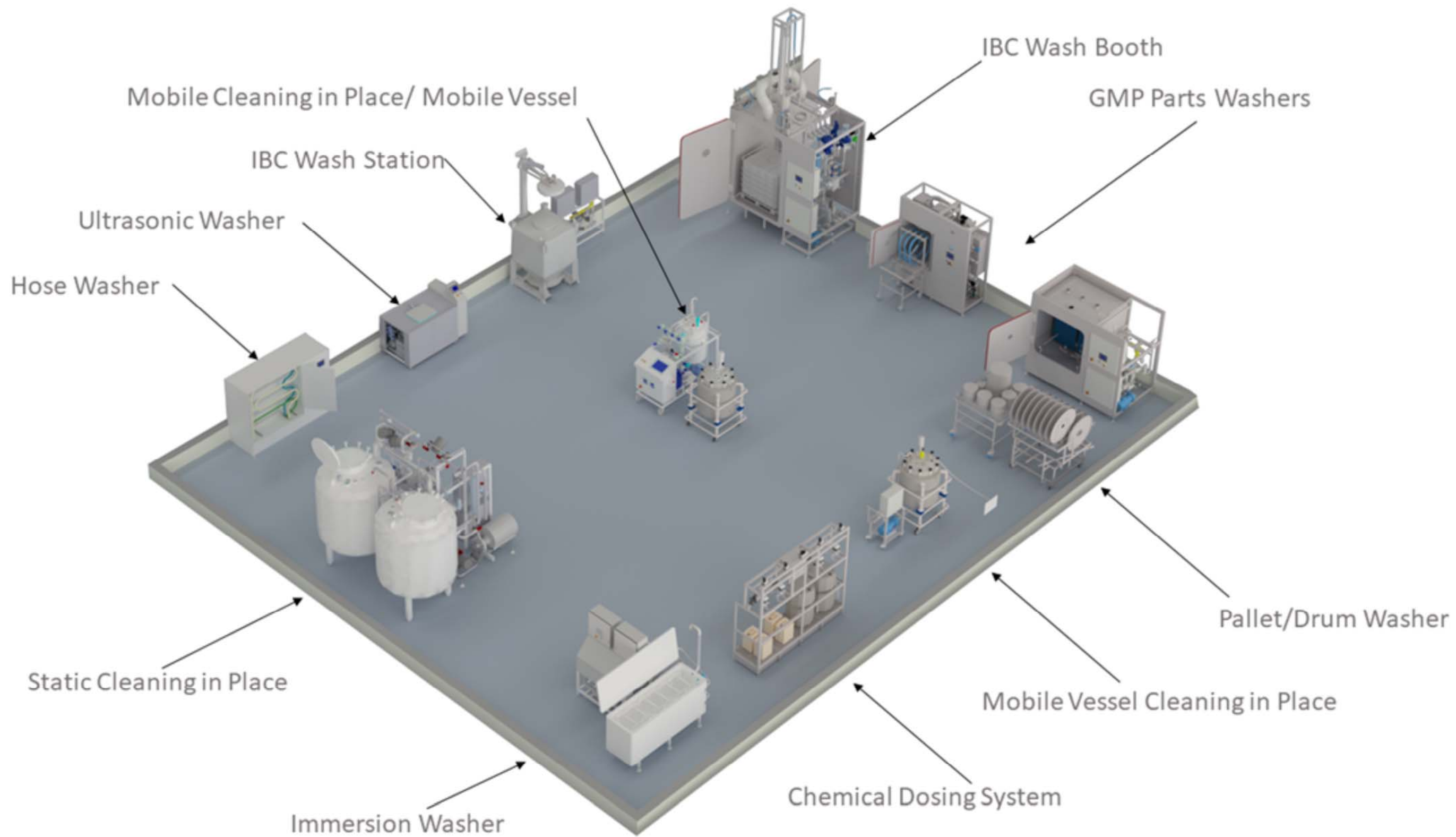


Mimic

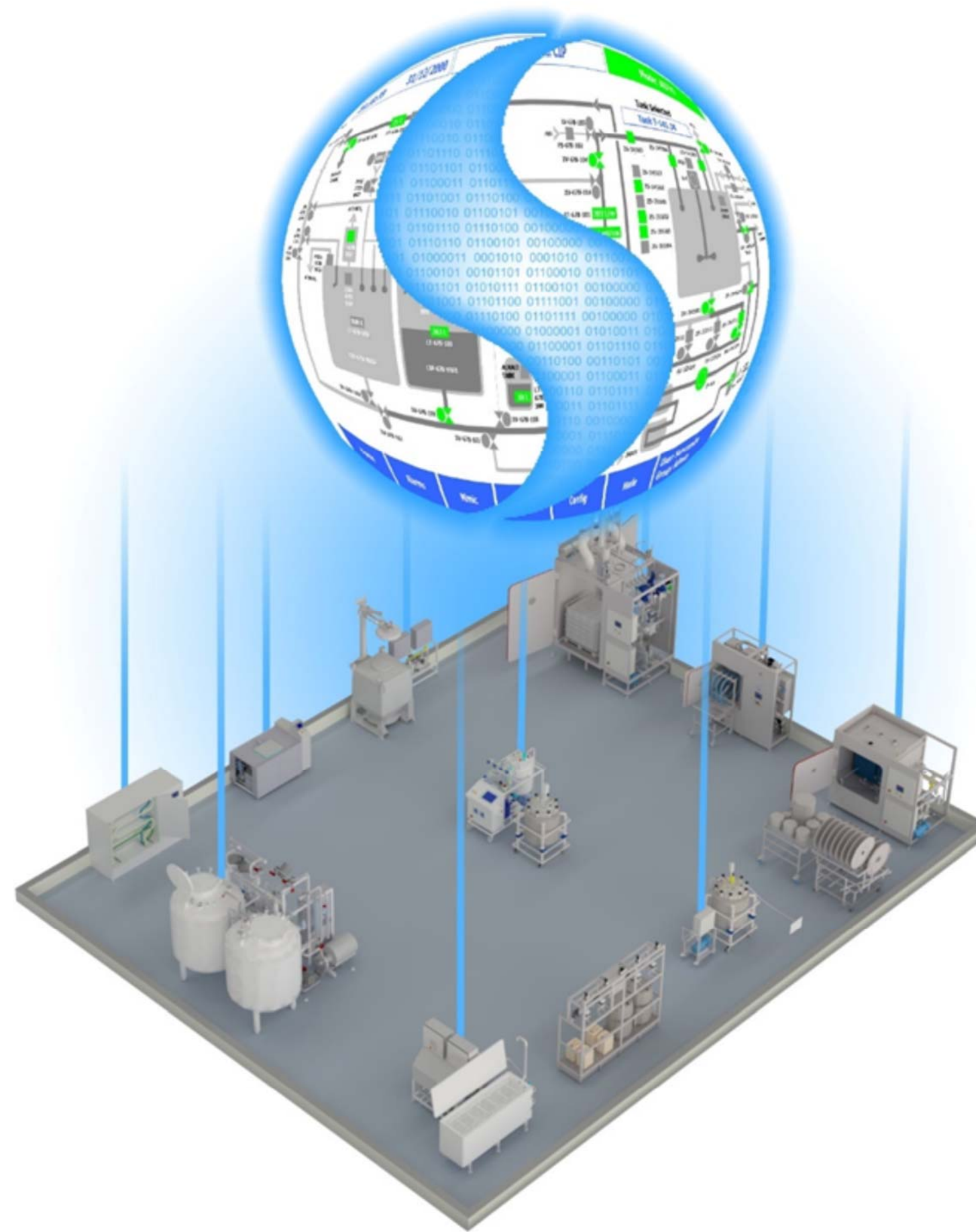


Recipe Setup





Washer Portfolio



Suncombe Washers Linked Automation Packages