



**SUNCOMBE**  
CIP, BIOWASTE & PROCESS SOLUTIONS

# HoseWasher™ Hose Washing System



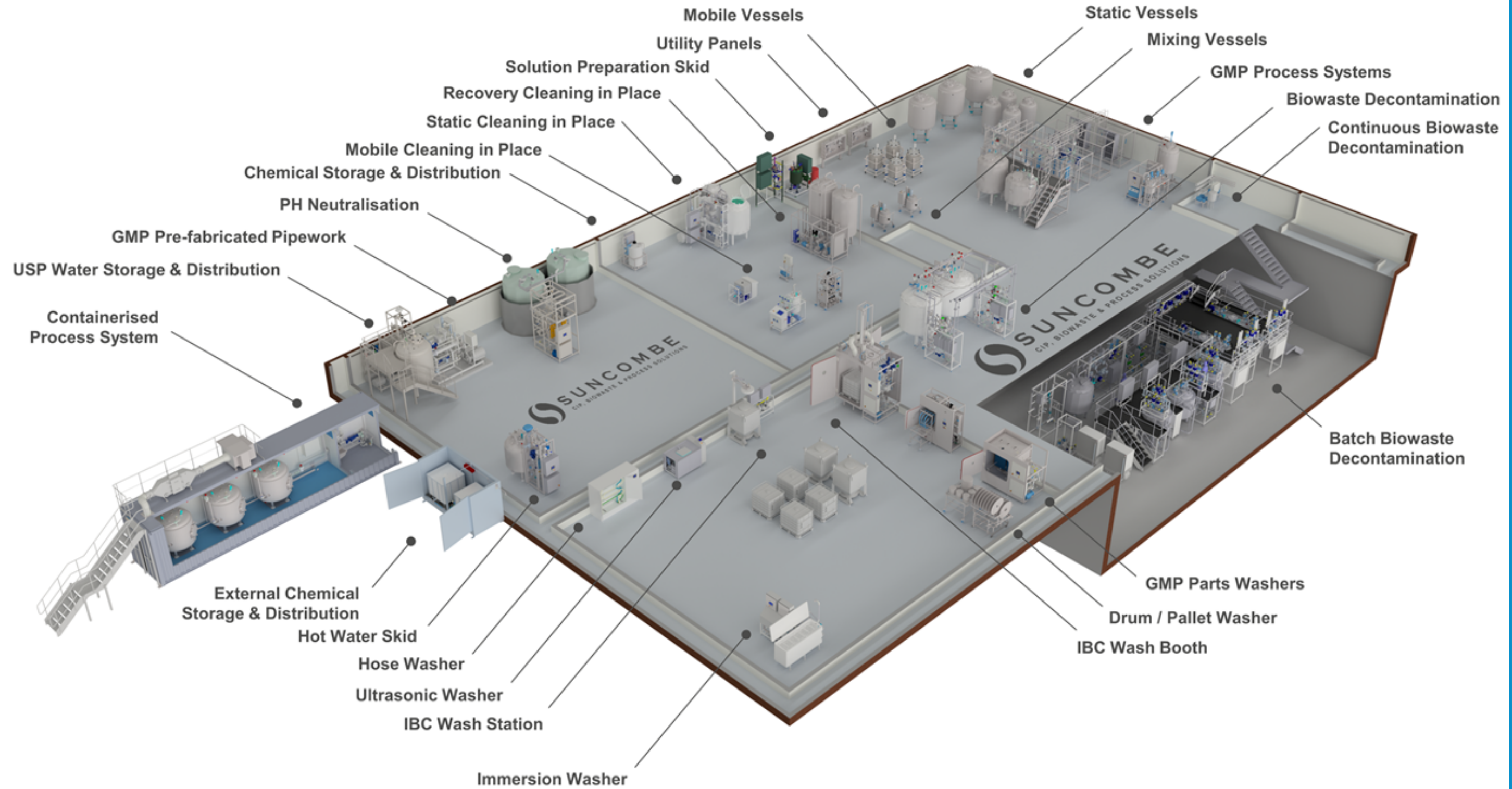
Suncombe Ltd, Jade House, Lockfield Avenue, Brimsdown, Enfield, Middlesex, EN37JY, United Kingdom

T +44(0)20-8443-3454 F +44(0)20-8443-3969 E [info@suncombe.com](mailto:info@suncombe.com) W [www.suncombe.com](http://www.suncombe.com)



# SUNCOMBE

CIP, BIOWASTE & PROCESS SOLUTIONS



## Product Portfolio

# Suncombe HoseWasher™

## HoseWasher™ Introduction

The Suncombe HoseWashers have been supplied for over 35 years for providing a controlled location for cleaning flexibles and hoses. These units include a Cleaning in Place (CIP) system mounted in the cabinet to provide the cleaning media and the control.

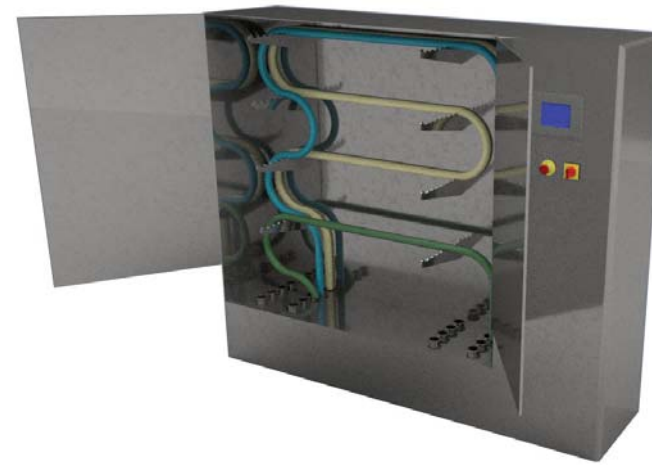
Developed to provide a permanent location for hose washing, allowing the flexibles and hoses to be connected in the same manner for each wash. They are high specification units that employ controllable and recipe variable and high power washing to provide a contained, validatable wash.

## Internal Only Cleaning

A stainless steel open rack is provided to connect the hoses for cleaning and a PureCIP™ Cleaning System is used for the cleaning.

## Internal and External Cleaning

The hose rack is integrated within an enclosure for internal and external cleaning. The enclosed HoseWashers provide a contained environment which minimises noise and provides protection in case of any leaks of high temperature water and/or chemicals. External cleaning is by provided by Suncombe exclusive Splurge Bars, providing repeatable results at low flow.



HoseWasher™ Enclosed Version for Internal and External Cleaning



HoseWasher™ Rack Version for Internal Cleaning

## Automation System

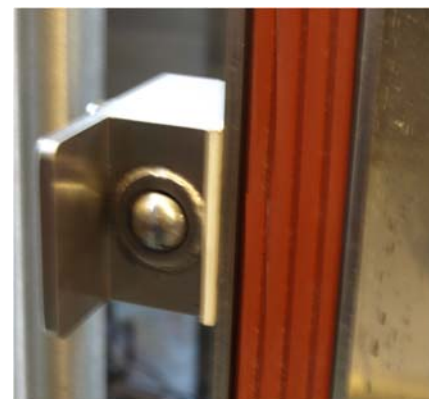
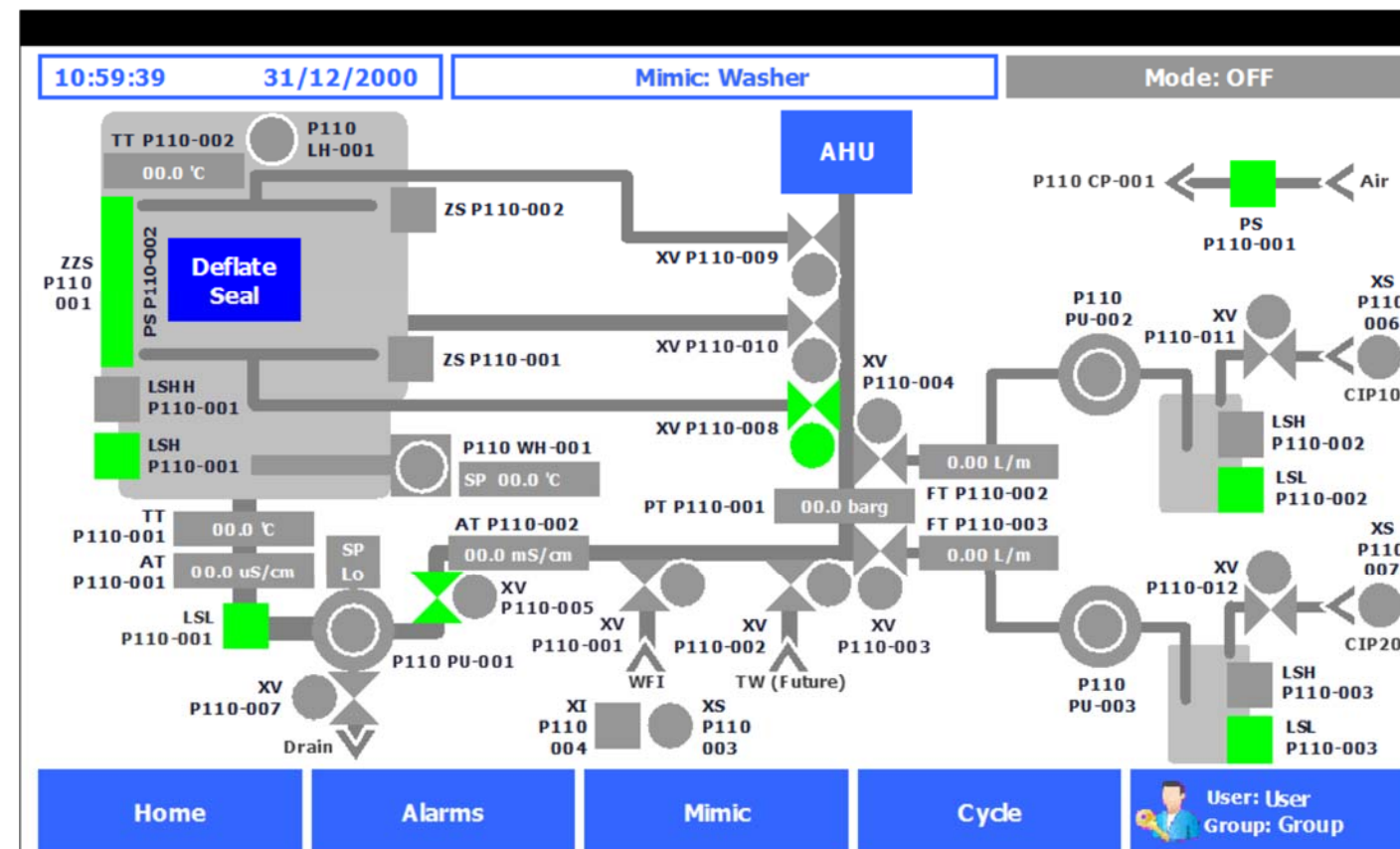
The Integrated automation is designed to be operator friendly and simple to use whilst providing flexibility and optimisation. Reliable and robust, they have been developed over the last 20 years, they encompass all elements required to provide a controllable, repeatable automatic system. A range of automation levels are available, starting from entry level, through mid level PLC and HMI versions, to advanced validateable systems. All levels provide a repeatable automated cycle.

The versatile automation system allows you to build your own recipes from pre-commissioned steps in any order. The variables in each step can be individually configured.

Standard programmes are included for short clean, long clean and self clean/descale. Additional programmes can be individually configured allowing optimisation to ensure repeatability and maximum efficiency.

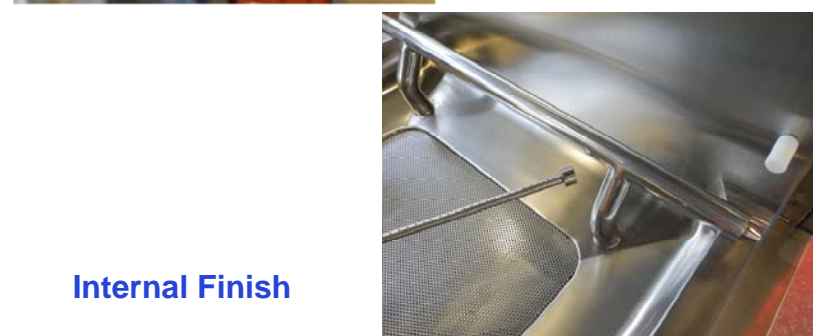
*\*See Automation Datasheet for full details*

## Typical HMI Mimic Diagram



Inflatable Door Seal

## Inflatable Door Seal

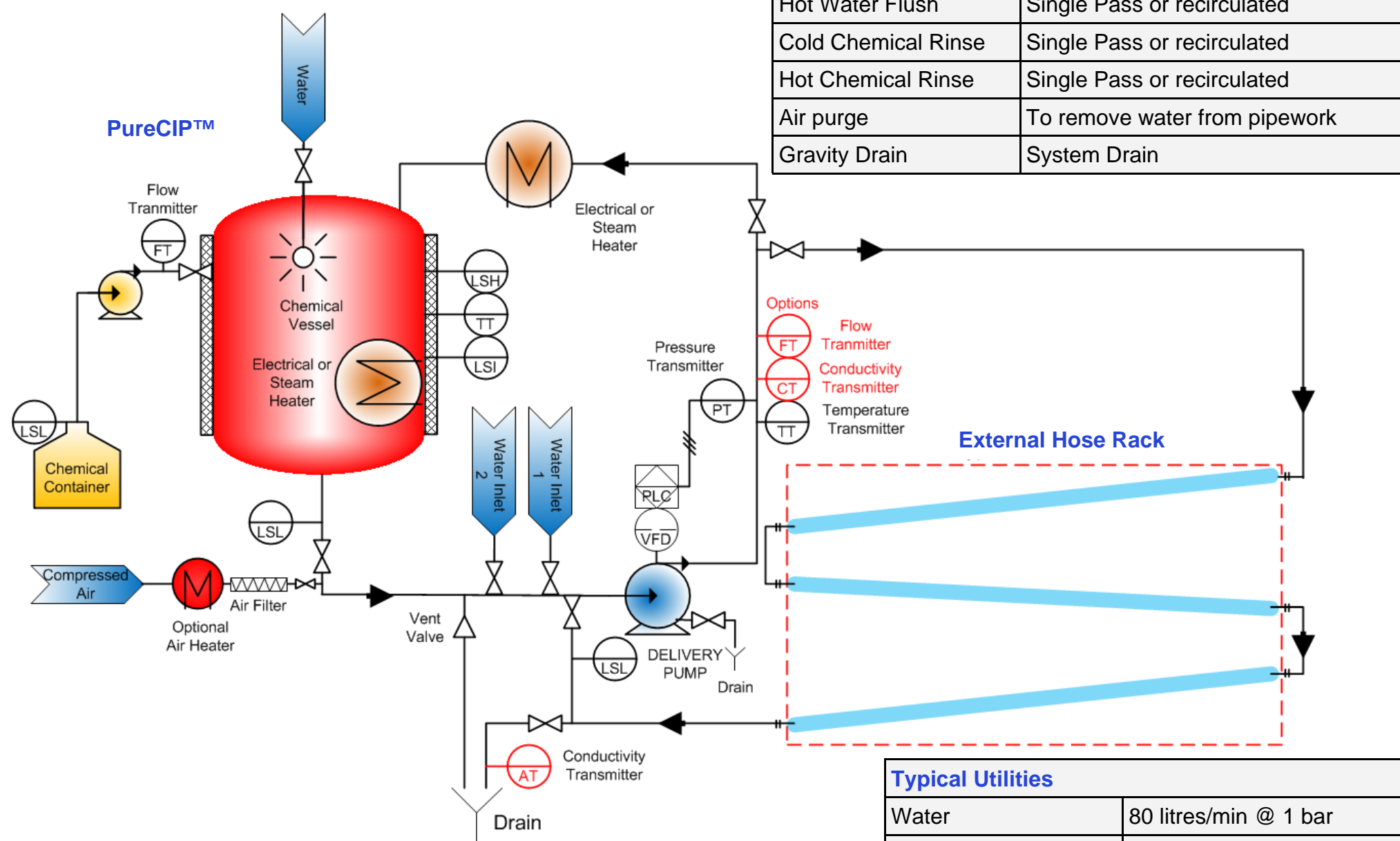


Internal Finish

## Internal Finish



HoseWasher™ Typical PFD with a PureCIP™



Typical Rinses	
Cold Water Flush	Single Pass or recirculated
Hot Water Flush	Single Pass or recirculated
Cold Chemical Rinse	Single Pass or recirculated
Hot Chemical Rinse	Single Pass or recirculated
Air purge	To remove water from pipework
Gravity Drain	System Drain

Features and Options

- Connection point for cleaning single hoses or multiple hoses together
- Configurations for hoses of different diameter, different length and different end connection
- Single or multiple hose cleaning circuits to prevent cross contamination
- Internal supports for mounting hoses to ensure full drainability.
- Open rack or Enclosed versions
- On enclosed units hinged door, complete with door lock and door closed sensors
- Optional drying system with HEPA filters, heaters and condensers
- Optional Remote Washing Fluid Generation Skid

Typical Manufacturing Standards\*

- Sanitary Construction, fully drainable, crevice free.
  - 316 stainless steel contact parts, 304 non-contact parts, T.I.G. Welding
- \*See Manufacturing Standards Datasheet for full details

Typical Equipment\*

- 316 Stainless Steel pipework
- Large Sanitary Centrifugal Pump
- Sanitary Valves, manual and air operated
- Steam heating
- Calibrated Instruments

\*See Equipment Standards Datasheet for full details

Testing

All functions of the equipment would be fully wet and dry tested and test results would be documented in the 'Pre-Factory Acceptance Test' (FAT) protocol. Following successful completion of this protocol, the client will be invited to the FAT test, where all tests can be repeated or the pre-FAT tests results can be used.

Typical Cycle	
Pre-Rinse Flush	Deliver water as a single pass rinse
Pre-Rinse Rinse	Deliver water and recirculate
Gravity Drain	System Drain
Chemical Rinse	Deliver chemical solution and recirculate
Gravity Drain	System Drain (option to recover)
Post Chemical Rinse	Deliver water and recirculate
Gravity Drain	System Drain
Inter-rinse Rinse	Deliver water and recirculate
Final Rinse	Deliver water as a single pass rinse
Air purge	Removes water from pipework
Gravity Drain	System Drain

Typical Utilities	
Water	80 litres/min @ 1 bar
USP Water (optional)	80 litres/min @ 1 bar
Air	Minimal use @ 7bar
Electricity	24 kW 400Vac 3ph+n 50hz
Steam (if available)	500 kg/hr @ 3 bar
Drain	400 litres/min @ 1 bar

Part #	Duty Details		
	Maximum Hose Length	Number of Hoses	Hose Diameter inch (mm)
HoseWasher2000	2,000	1 to10	0.25" (6mm) to 3" (80mm)
HoseWasher3000	3,000	1 to10	0.25" (6mm) to 3" (80mm)
HoseWasher4500	4,500	1 to10	0.25" (6mm) to 3" (80mm)
HoseWasher6000	6,000	1 to10	0.25" (6mm) to 3" (80mm)
HoseWasher8000	8,000	1 to10	0.25" (6mm) to 3" (80mm)

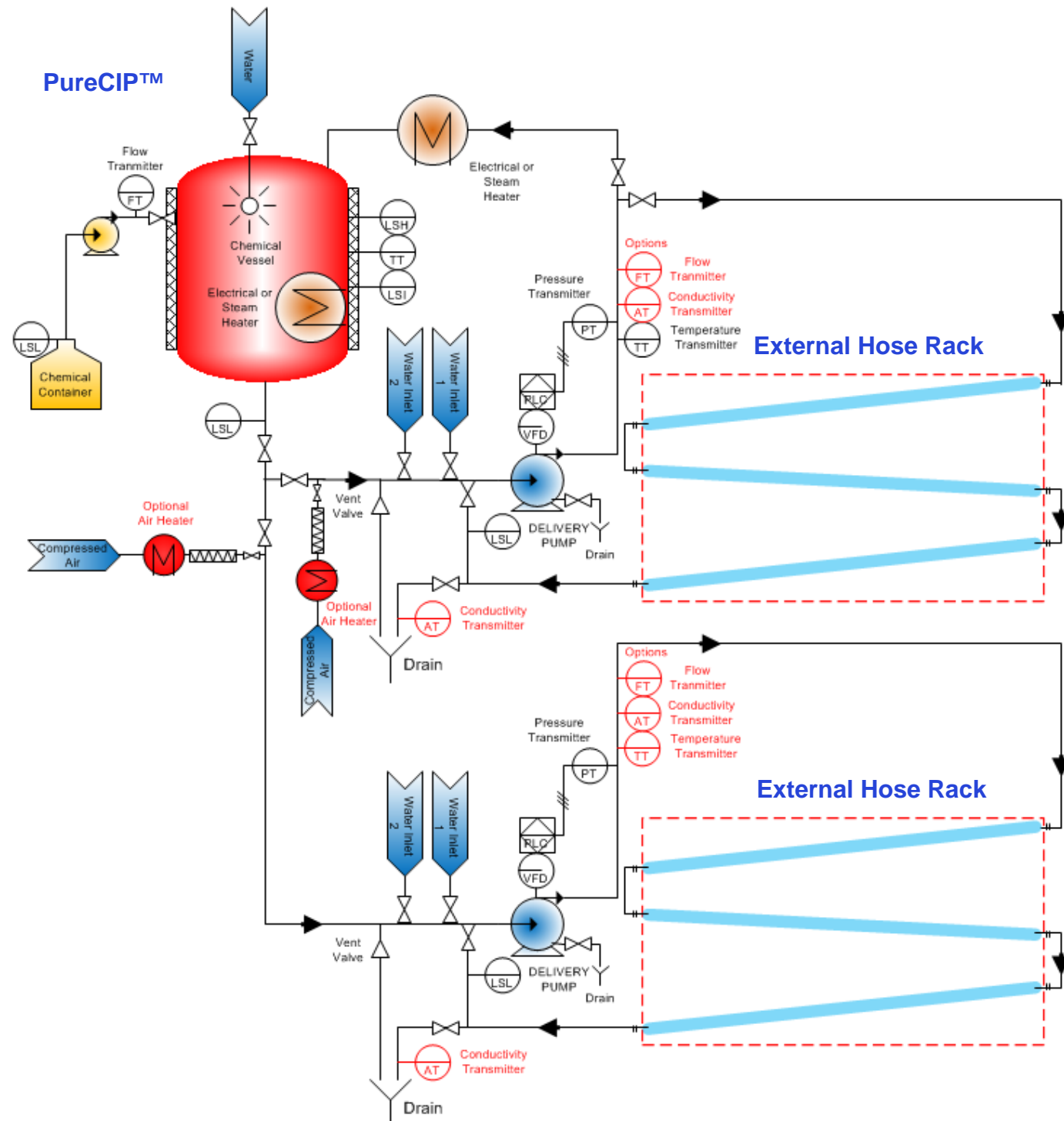
## Multiple Channel Systems

The cleaning philosophy of the Suncombe Hose Washers allows a single multiple Channel PureCIP™ to run multiple Suncombe HoseWasher™s simultaneously.

The advantages of using a single multiple Channel PureCIP™ include:

- Smaller Footprint for space savings
- No cross contamination between separate Hose Washes
- Cost saving by using a single Chemical Vessel
- Logistic improvement with only one chemical container for multiple hose washers

## HoseWasher™ Typical PFD with a Two Channel PureCIP™

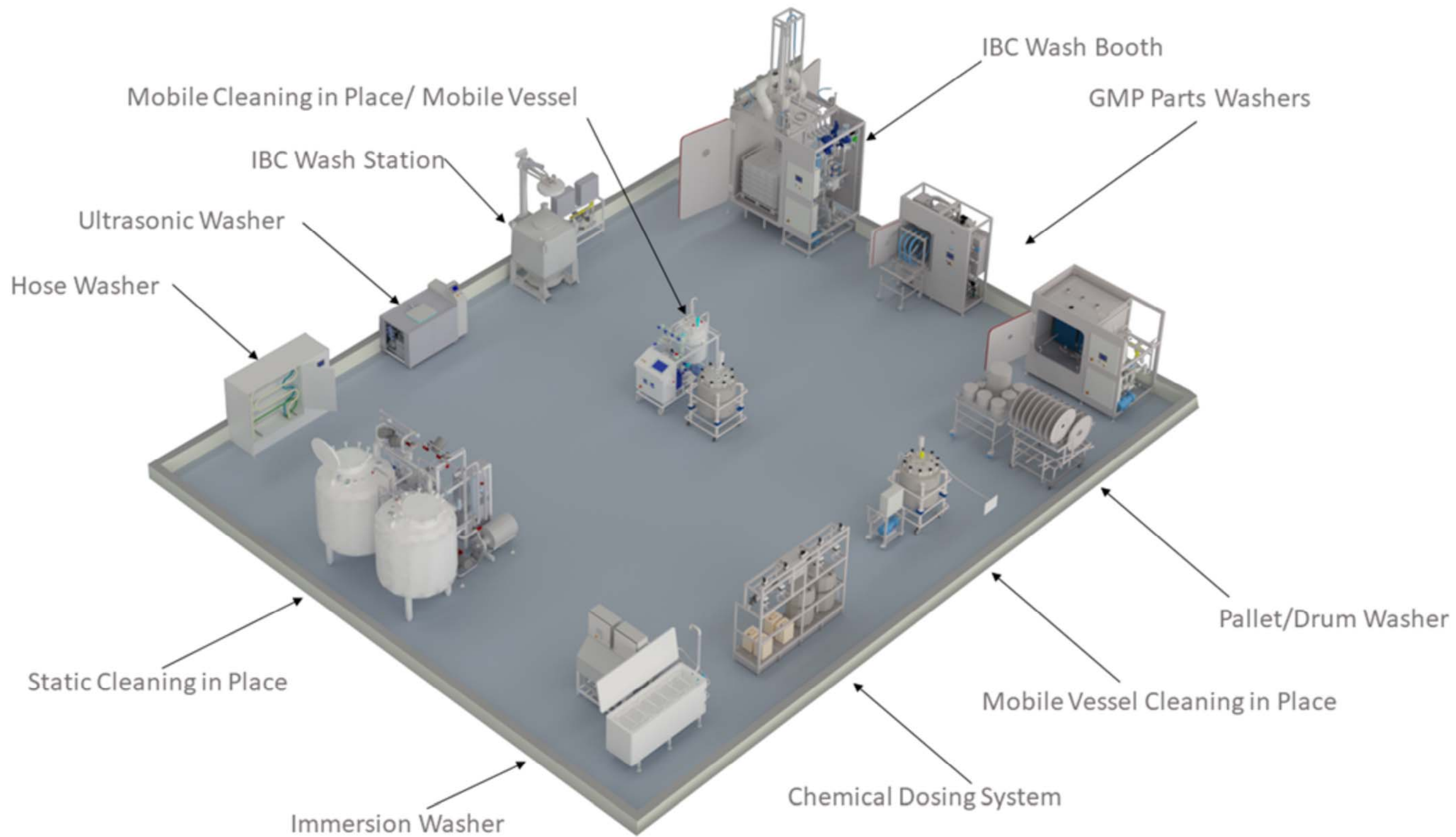


## Typical Static PureCIP™ for local or remote positioning

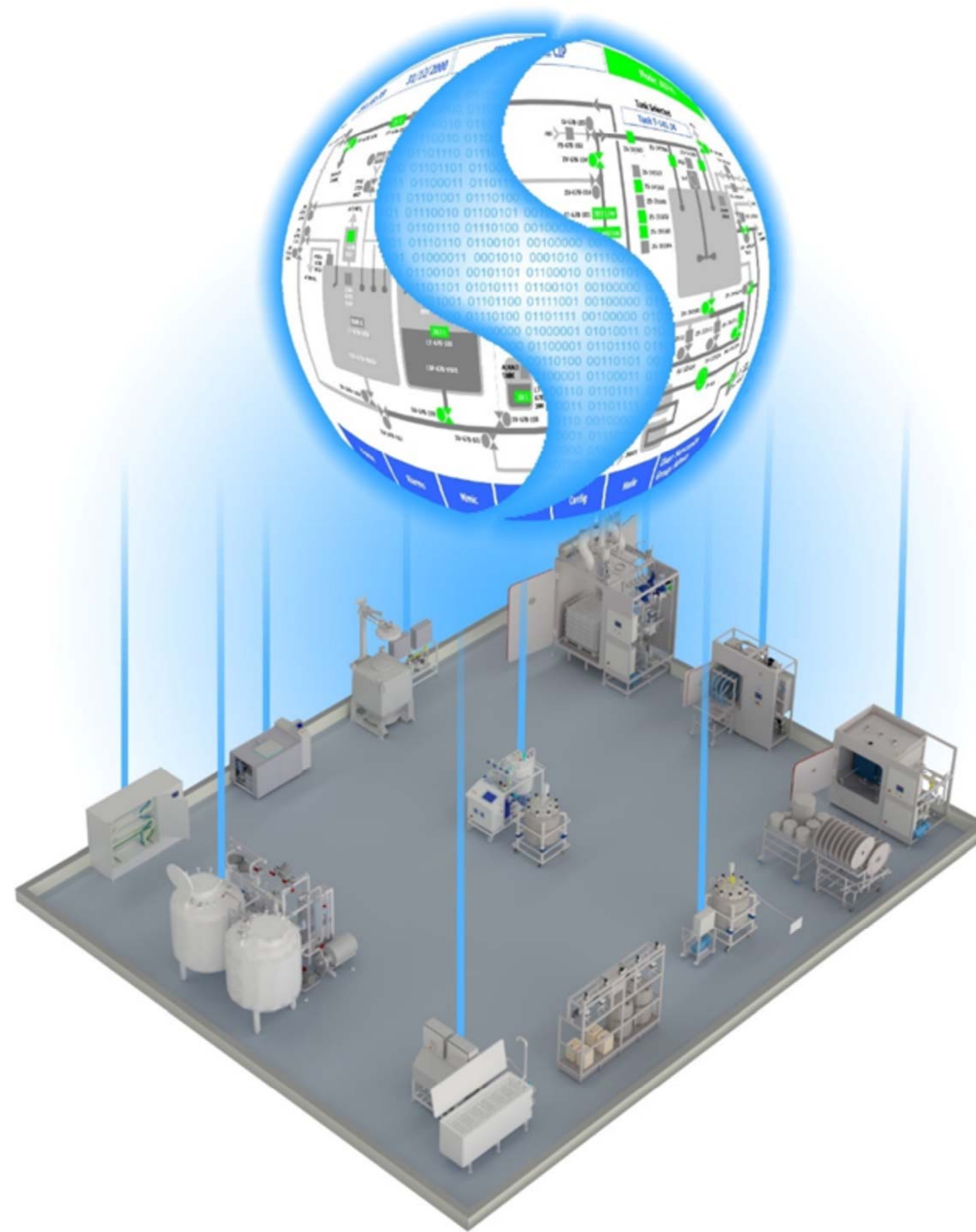


Typical Mobile PureCIP™





## Washer Portfolio



## Suncombe Washers Linked Automation Packages